

DECEMBER 2023

Views from the Village

Boise Christian Retirement Village Newsletter



Boise Christian Homes Inc.
3223 North 36th Street
Boise, Idaho 83703

208-344-0551

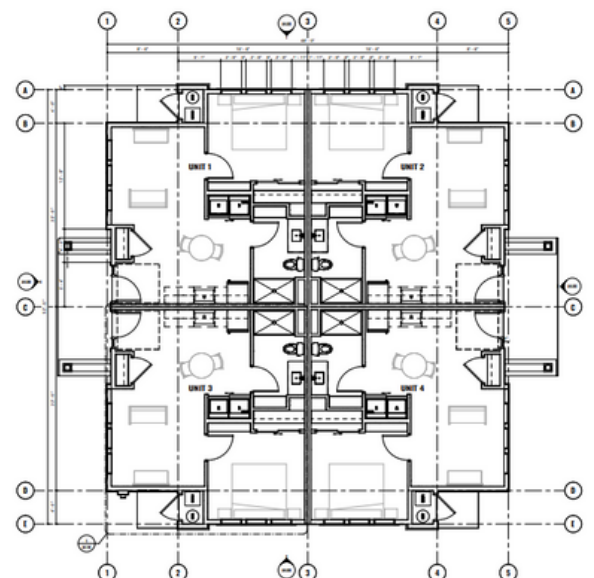
hello@boisechristianhomes.org

Redevelopment

Many of our long term supporters know we have been in need of a redevelopment of the BCH retirement village for some years now. Maintenance challenges, accessibility issues, and recent costly repairs have made this even more urgent.

The Redevelopment Committee has completed a multi-year phased master plan for the Village that will allow for modernization, incorporating age-friendly features, enhanced security, and energy efficiency. The plan centers around a new community building/dining hall and single level four-plex housing units for the residents in the first phase. This first phase has been approved by the board and submitted to the city for approval.

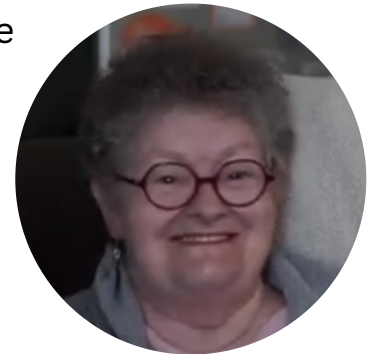
(All images and plans are subject to change.)



(Overall site plan and example of building with four 1-bedroom units shown above.)

Resident Spotlight - Mary Meister

Mary Meister (she prefers Marty) moved here from Georgia in March of this year. A simple statement until you consider the profound courage, commitment, and prayer it requires to dispose of most of one's material possessions, board an airplane, and fly 2,175 miles into a future holding multiple unknowns. She was in touch with her son and his family here and they felt a move to be closer to them was best, but no apartment had been secured and no other helpful contacts had stepped in. It was time for God to dot the i's and cross the t's of Marty's prayer. Last moment blessings appeared and with those, Marty's home in Idaho became a reality.



But then a new life has to be built. Transportation: a car became available. There were address changes. There were schedules to learn, new medical and insurance providers to find, new "rules of the road", so to speak, to make one's own. Then, thankfully, there were new friends. Which are the essence of our ability to connect.

Marty's faith and church involvement have been major forces in her life. Marriage, children, devotion to family, changes to family, relocation, employment; faith helps us to stand tall. Faith is a person's constant which sustains and is the principle by which Marty grounds her life. The Village is the structure which assists each one of us in the pursuit of a healthy, God-driven life. Her journey continues. - Written by Karolynn Hutchison

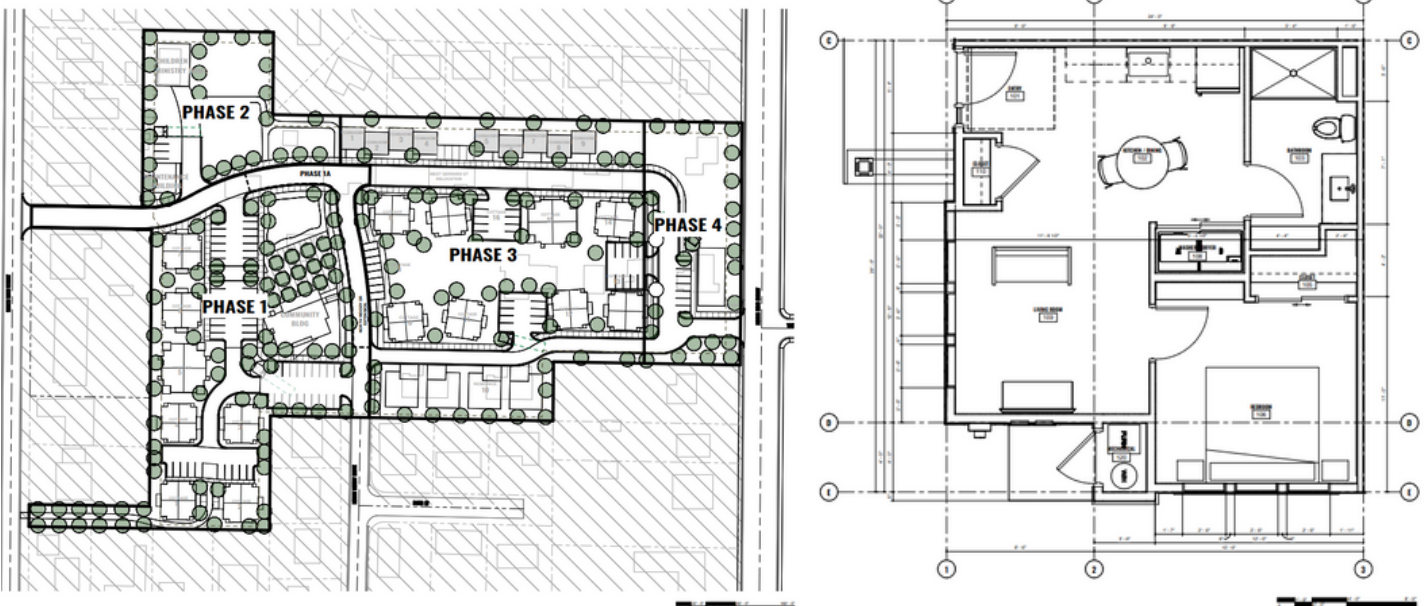
**It's time to send in your
end-of-year donations.**

**You can mail us a check or utilize our secure
website for donations.**

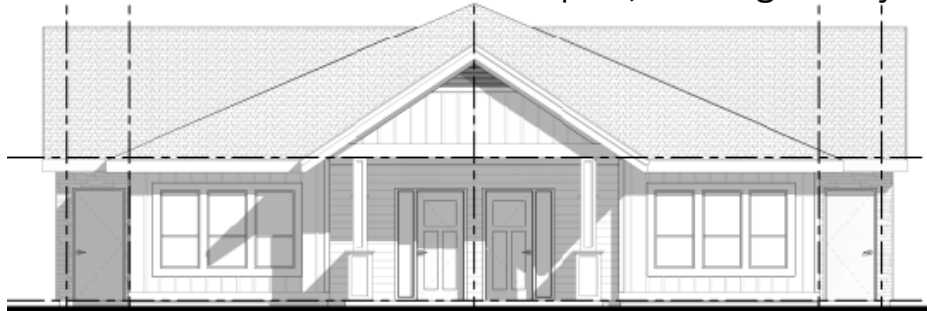
**Safe and secure donations can be made through:
<https://www.boisechristianhomes.org/donate>**

More on the Redevelopment

We've recently had a community meeting about the redevelopment of our property. This gave our neighbors an opportunity to have a voice and be on the same page with us. You can contact our main phone number or email to get additional details or more information. This page has some of the drawings and graphics that our architects have provided. We would love for you to partner with us in this redevelopment financially and have added a question to our online donation form so that you can let us know that you'd like your donation to help the redevelopment.



(Possible phases and one bedroom unit examples, all images subject to change.)



(3D rendering of proposed community center, all images subject to change.)

Administrator's Corner

Christmas is a time of reflection, a reminder of the profound message of hope and love that the birth of Jesus Christ represents. In the Gospel of Luke 2:10-11, we find solace in the words, "And the angel said to them, 'Fear not, for behold, I bring you good news of great joy that will be for all the people. For unto you is born this day in the city of David a Savior, who is Christ the Lord.'"

This scripture encapsulates the essence of Christmas – a celebration of the miraculous gift of God's love, embodied in the birth of Jesus. The birth of Jesus is the fulfillment of so many promises from God to His people, the ultimate showing of His love for us. This is a time when we, as a community, come together to share that love with one another. As we decorate our homes, exchange gifts, and enjoy the fellowship of family and friends, let us not forget the true meaning of Christmas: "For God so loved the world..."

May our hearts be filled with compassion, kindness, and gratitude. Let us cherish the moments of togetherness, remembering that the greatest gift we can give is the love that overflows from our Father in heaven. Wishing you all a blessed and joyous Christmas!

Written by Michael Morris, Administrator for Boise Christian Homes

Partner with Us

You can join our community in many ways:

- Set up a recurring donation through our website or your bank.
- Set up a large one-time gift for the village.
- Send a donation by check or drop one off and visit with us.
- Come visit with residents or serve on a volunteer basis.
- Organize a group to come out and serve.
 - There's always raking, snow removal, beautifying, etc.
- Pray for us.